

***Oracle WebLogic Server 12cR2 on
SUSE Linux Enterprise Server 12 (SP1)
for x86-64***



<http://www.suse.com>

Table of Contents

Introduction.....	3
System Requirements and Specifications.....	3
Hardware Requirements.....	3
Software Requirements.....	3
Testing machine information.....	3
Prerequisites.....	4
Installing SUSE Linux Enterprise Server 12.....	4
Installing Java.....	6
Oracle WebLogic Server 12cR2 Installation.....	7
Installing Oracle WebLogic Server software.....	7
Creating and Configuring the WebLogic Domain.....	17
Starting the AdministrationServer and verifying the Configuration.....	25
Additional Comments	27

Introduction

This document provides details on installing Oracle WebLogic Server 12cR2 on SUSE Linux Enterprise Server 12 (SP1). Details are provided for Intel x86-64 versions of both Oracle WebLogic Server 12cR2 and SUSE Linux Enterprise Server 12. Similar steps apply to other platforms (x86, ia64, System z, etc.). If you encounter issues or have general questions, please post your query to suse-oracle@listx.novell.com.

Official Oracle product documentation is available at: <http://docs.oracle.com/en/>

System Requirements and Specifications

Hardware Requirements

Requirement	Minimum
CPU	1-GHz CPU
Physical Memory	4 GB
Swap space	Approx. twice the size of RAM
Disk space in /tmp	2 GB
Disk space for software files	2 GB

Software Requirements

SUSE

- SUSE Linux Enterprise Server 12 SP1 (x86-64)
(<http://download.suse.de/install>)

Oracle

- WebLogic Server 12cR2 (12.2.1) (fmw_12.2.1.0.0_wls_Disk1_1of1.zip)
(<http://www.oracle.com/technetwork/middleware/fusion-middleware/downloads/index.html>)
- Java SE Development Kit 8 (jdk-8u91-linux-x64.tar.gz)
(<http://www.oracle.com/technetwork/indexes/downloads/index.html#java>)

Testing machine information

HP DL388 Gen9 Server

CPU: 2 * Intel(R) Xeon(R) CPU E5-2630 v3 @ 2.40GHz

RAM: 64 GB

NIC: 8

Local HDD: 2TB

OS: SUSE Linux Enterprise Server 12 SP1 (x86-64) - Kernel version: 3.12.49-11-default

Prerequisites

1. Installing SUSE Linux Enterprise Server 12

Follow the installation document (URL:<https://www.suse.com/documentation/sles-12/>) to Install SLES 12 (x86-64) on the test machine.

Figure 1-1 Software Installed as shown below

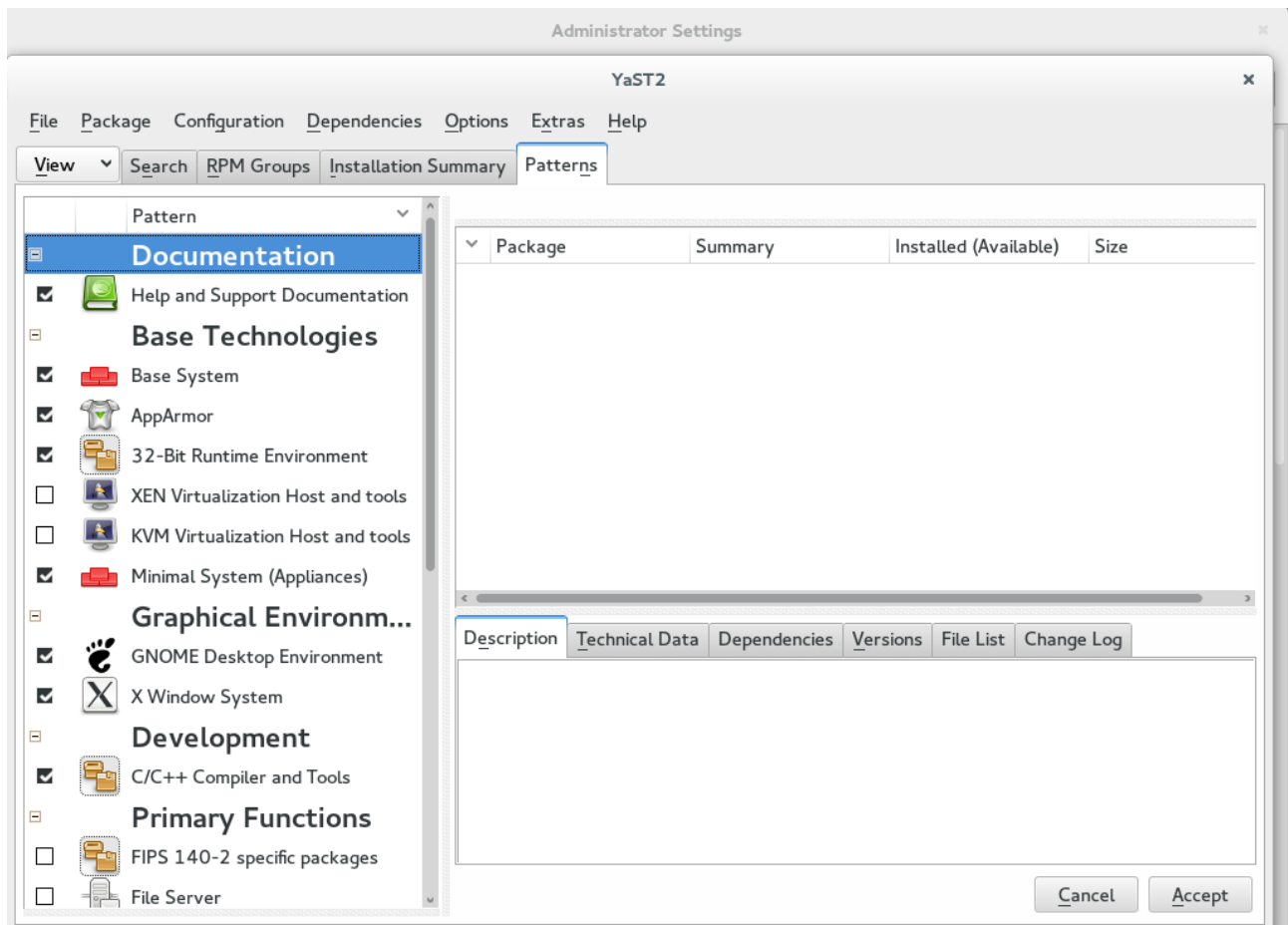


Figure 1-2 Software Installed as shown below

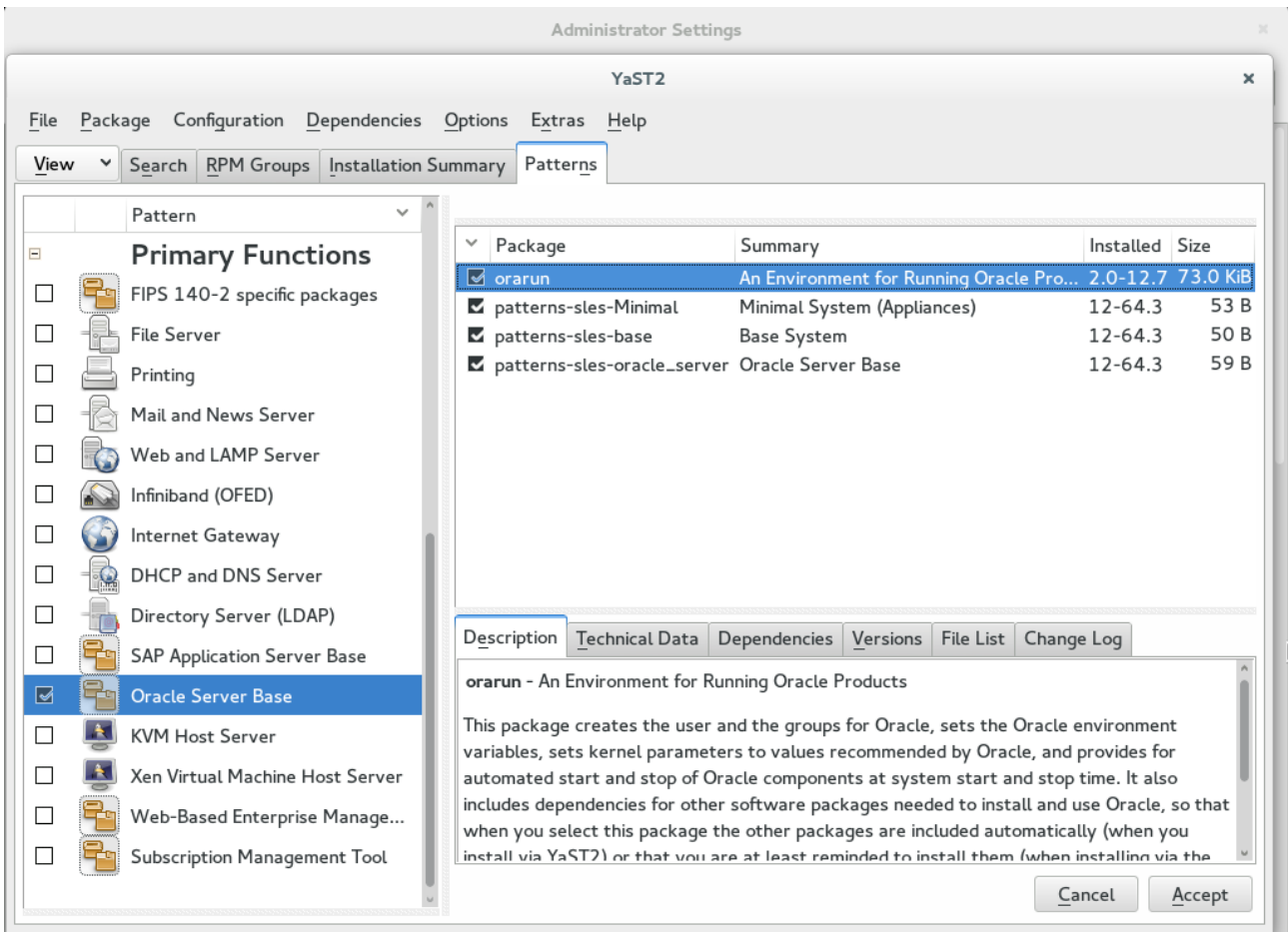


Figure 1-3 OS release information and kernel version

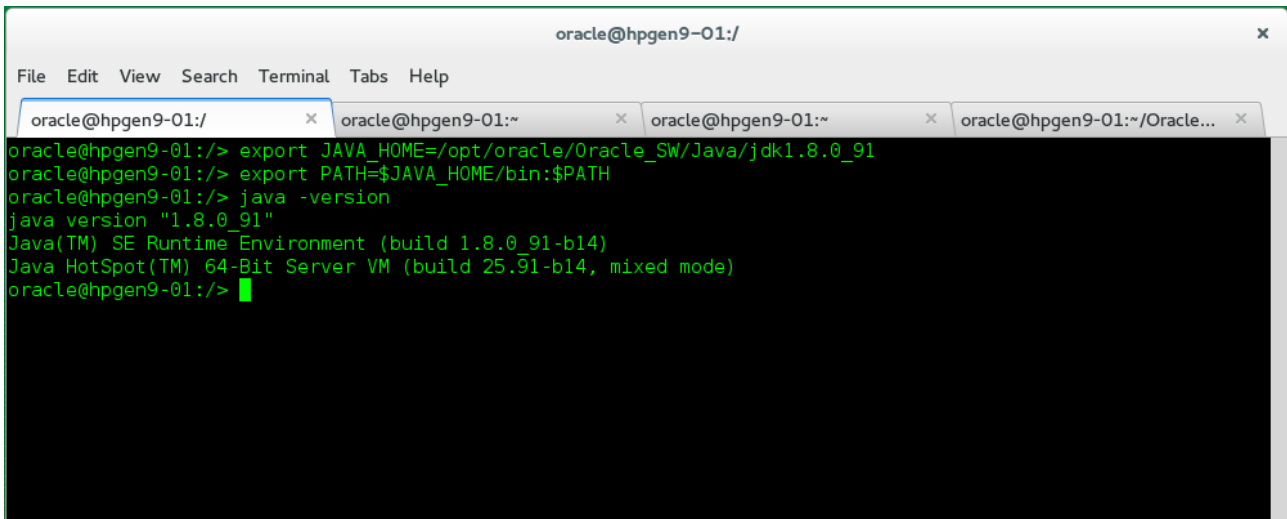
```
oracle@hpgen9-01:~> more /etc/os-release
NAME="SLES"
VERSION="12-SP1"
VERSION_ID="12.1"
PRETTY_NAME="SUSE Linux Enterprise Server 12 SP1"
ID="sles"
ANSI_COLOR="0;32"
CPE_NAME="cpe:/o:suse:sles:12:sp1"
oracle@hpgen9-01:~> uname -a
Linux hpgen9-01 3.12.49-11-default #1 SMP Wed Nov 11 20:52:43 UTC 2015 (8d714a0) x86_64 x86_64 x86_64 GNU/Linux
oracle@hpgen9-01:~> █
```

2. Installing Java

2-1. Oracle WebLogic Server 12cR2 (12.2.1) requires JDK 1.8 version. Log in to the target system (SLES 12 64-bit OS) as a non-admin user. Download Java SE Development Kit 8 (jdk-8u91-linux-x64.tar.gz) from <http://www.oracle.com/technetwork/indexes/downloads/index.html#java>

2-2. Set environment variables JAVA_HOME and PATH to ensure the proper JDK version is installed and ready for use.

Figure 2-1 Java information



```
oracle@hpgen9-01:/
File Edit View Search Terminal Tabs Help
oracle@hpgen9-01:/ x oracle@hpgen9-01:~ x oracle@hpgen9-01:~ x oracle@hpgen9-01:~/Oracle... x
oracle@hpgen9-01:~/> export JAVA_HOME=/opt/oracle/Oracle_SW/Java/jdk1.8.0_91
oracle@hpgen9-01:~/> export PATH=$JAVA_HOME/bin:$PATH
oracle@hpgen9-01:~/> java -version
java version "1.8.0_91"
Java(TM) SE Runtime Environment (build 1.8.0_91-b14)
Java HotSpot(TM) 64-Bit Server VM (build 25.91-b14, mixed mode)
oracle@hpgen9-01:~/>
```

Oracle WebLogic Server 12cR2 Installation

1. Installing Oracle WebLogic Server software

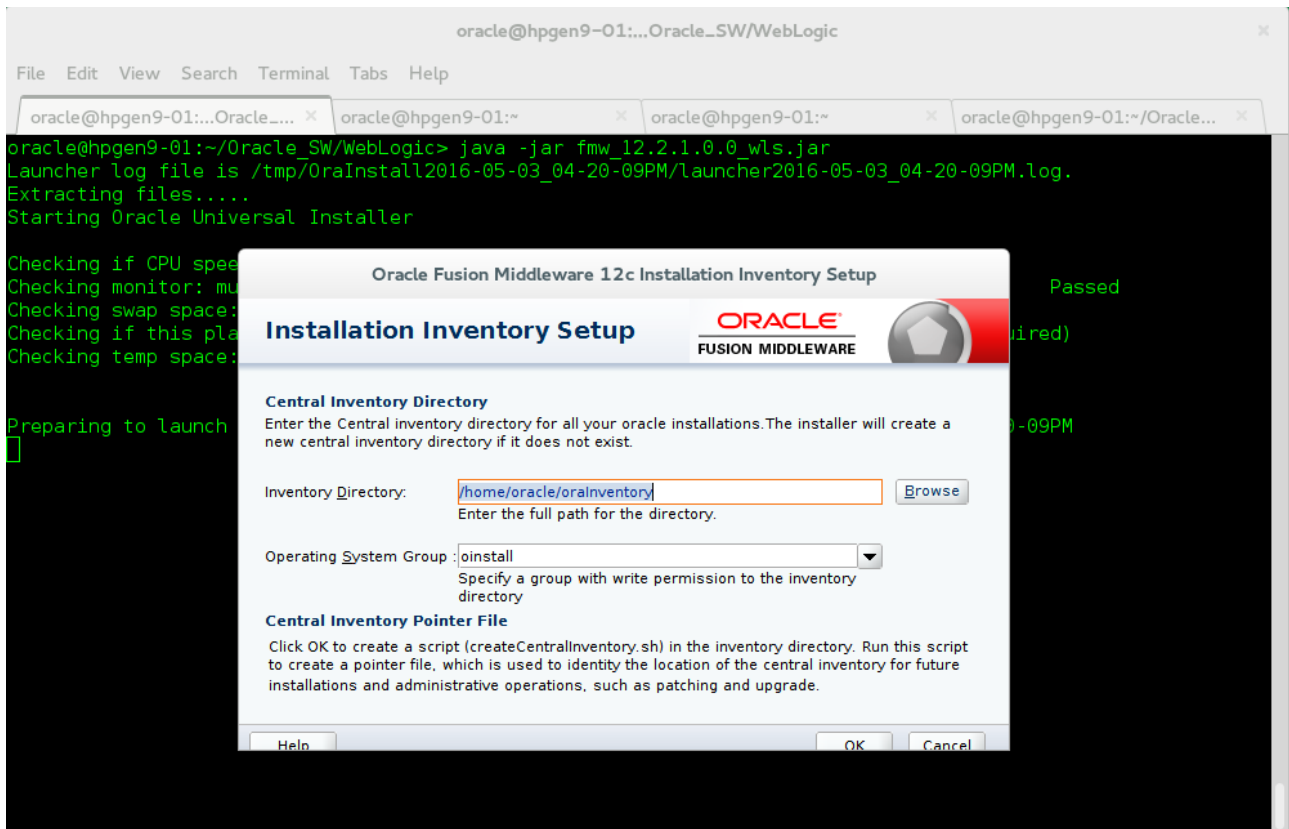
1-1. Log in to the target system (SLES 12 64-bit OS) as a non-admin user. Download the Oracle WebLogic Server 12cR2 (12.2.1) from <http://www.oracle.com/technetwork/middleware/fusion-middleware/downloads/index.html>.

(**Note:** Please ensure the installation user has the proper permissions to install and configure the software.)

1-2. Go to the directory where you downloaded the installation program. Extract the contents of this .zip (fmw_12.2.1.0.0_wls_Disk1_1of1.zip) file and launch the installation program by running '**java -jar fmw.xxxx.jar**'

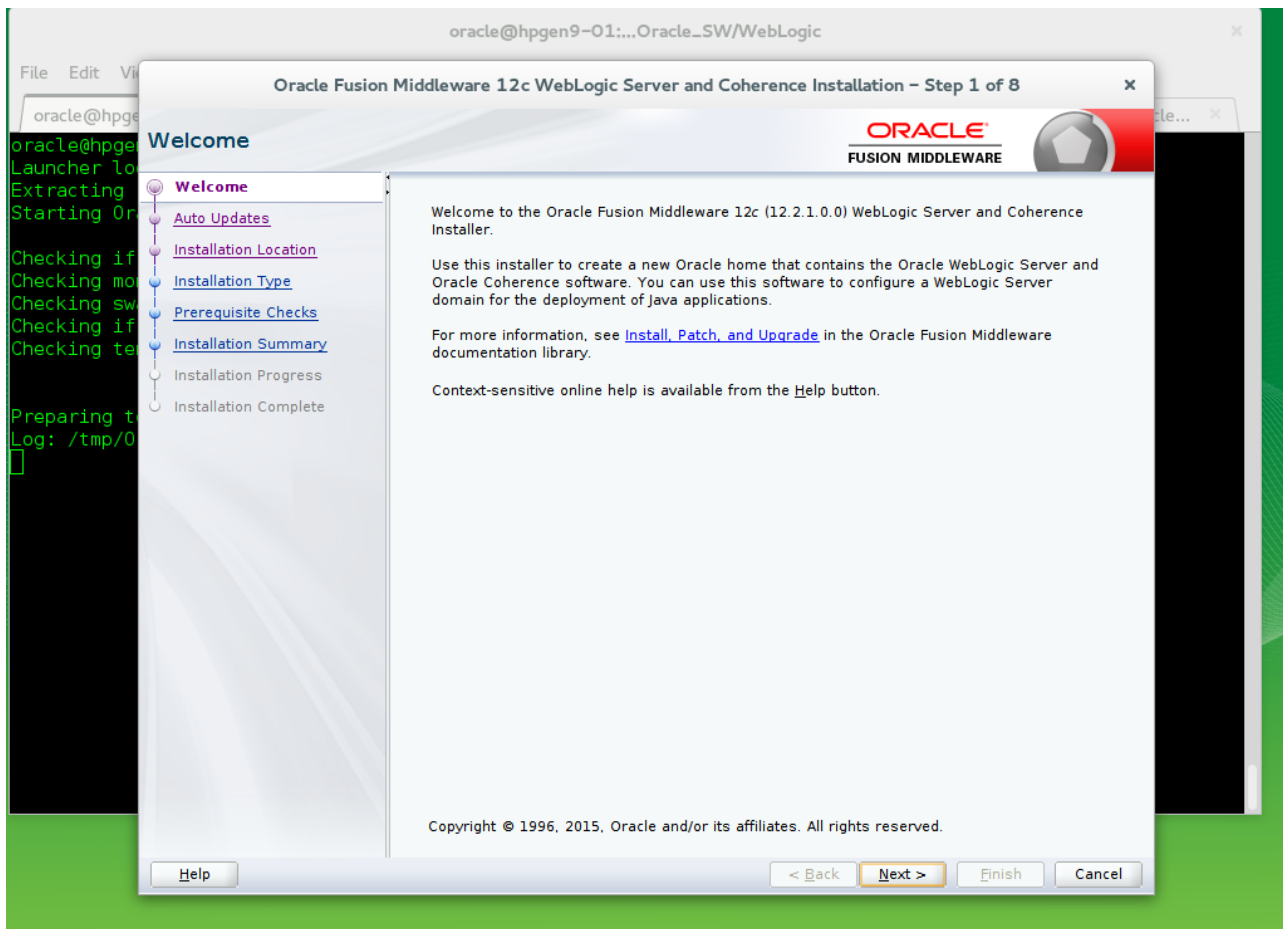
Install Flow:

1). Installation Inventory Setup.



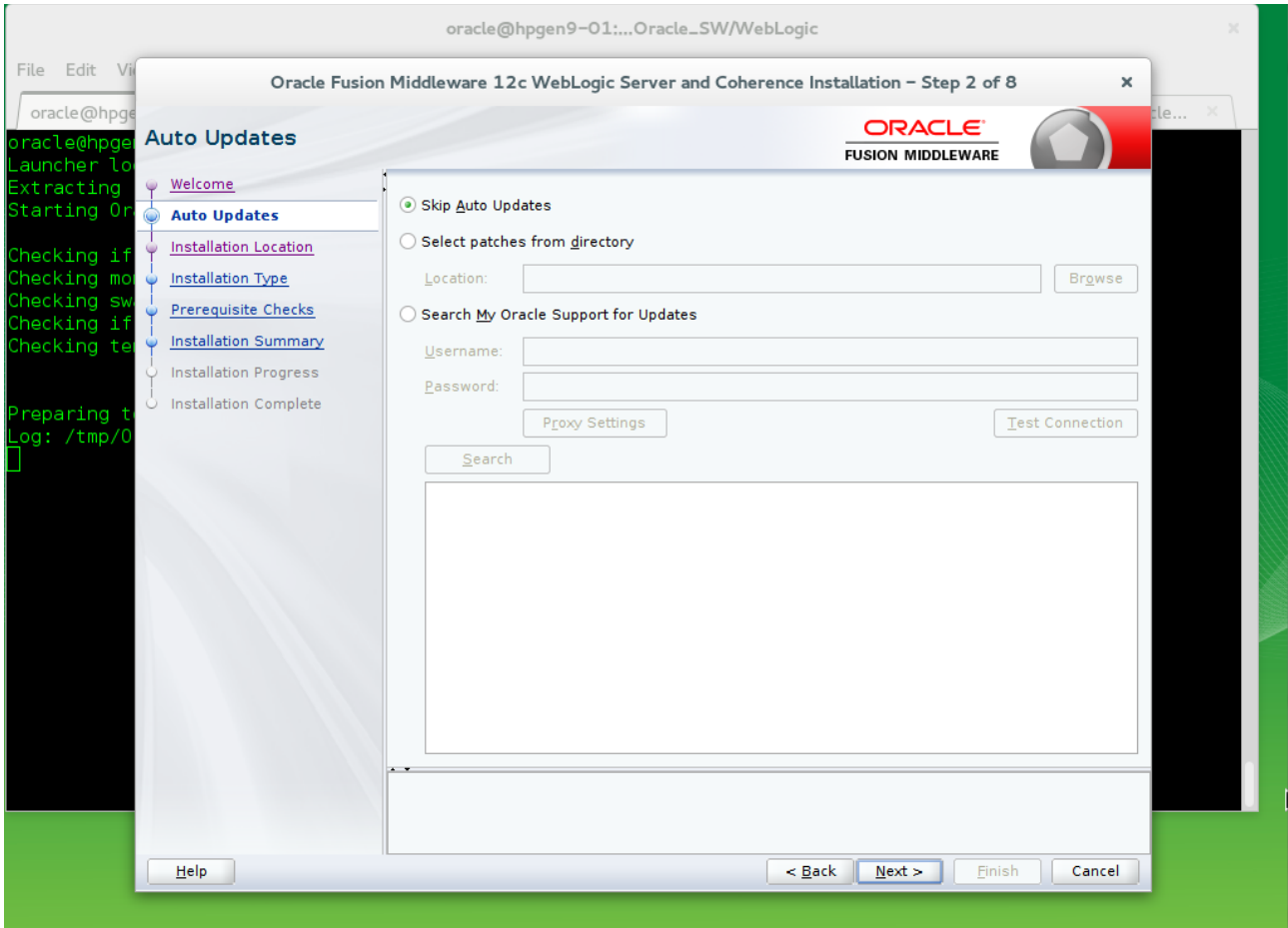
If this is your first Oracle installation on a host that is running SLES, please use this screen to specify the location of the Oracle central inventory directory and Operating System Group Name, then click **OK** to continue.

2). Welcome.



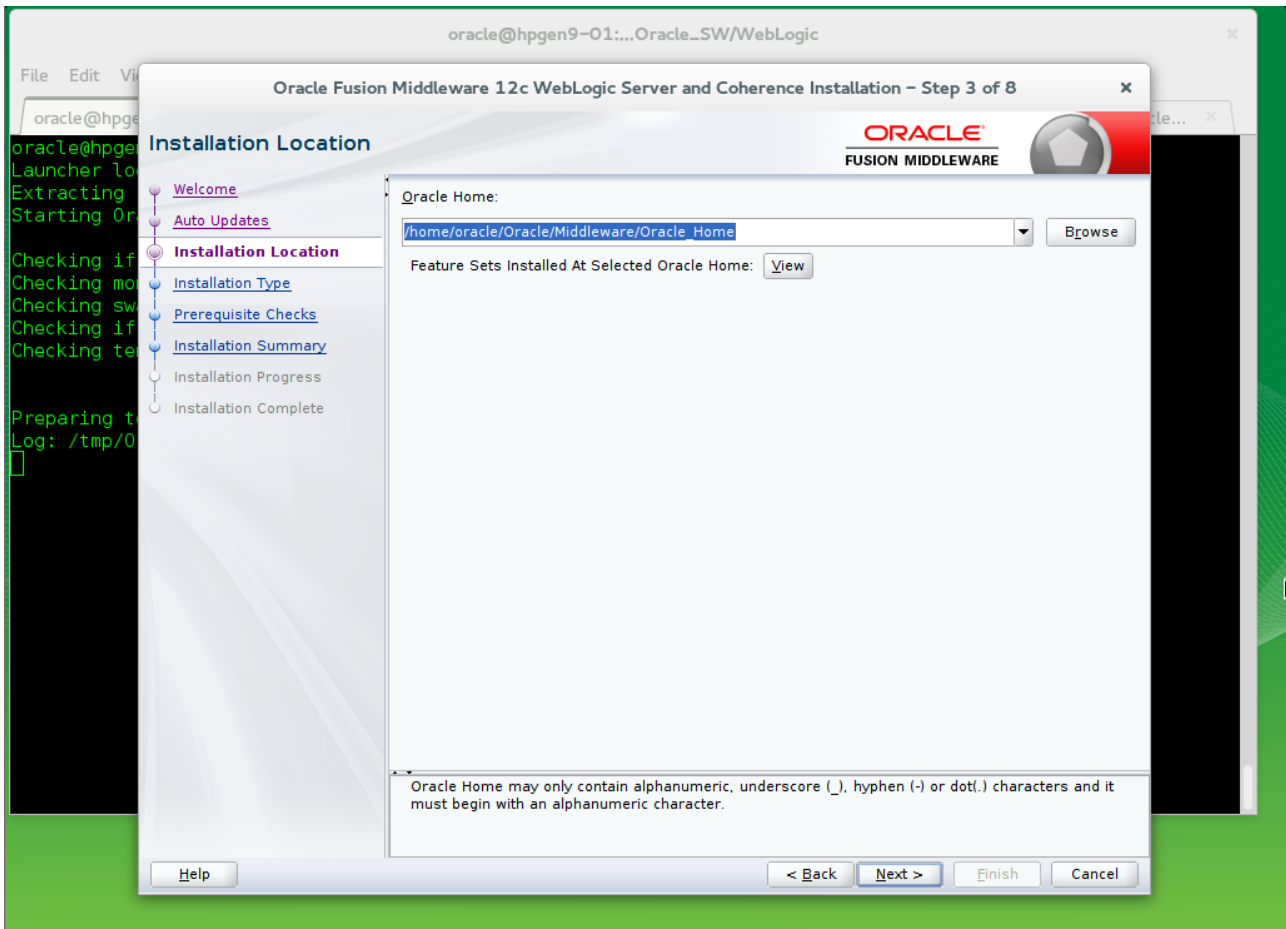
Review the information on this screen carefully to be sure you have performed all the necessary prerequisites, then click **Next** to continue.

3). Auto Updates.



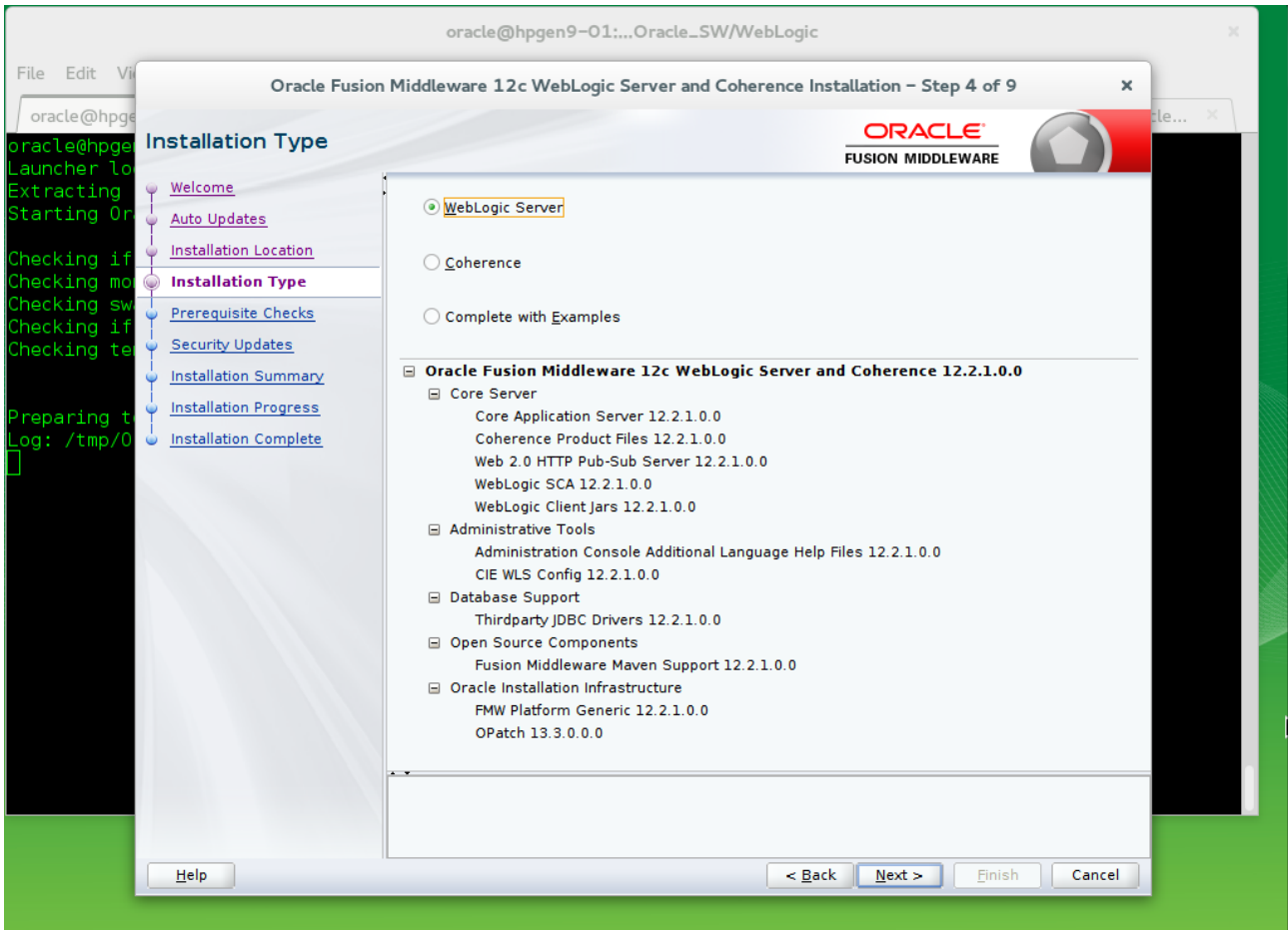
Select option "Skip Auto Updates" to skip this screen, then click **Next** to continue.

4). Installation Location.



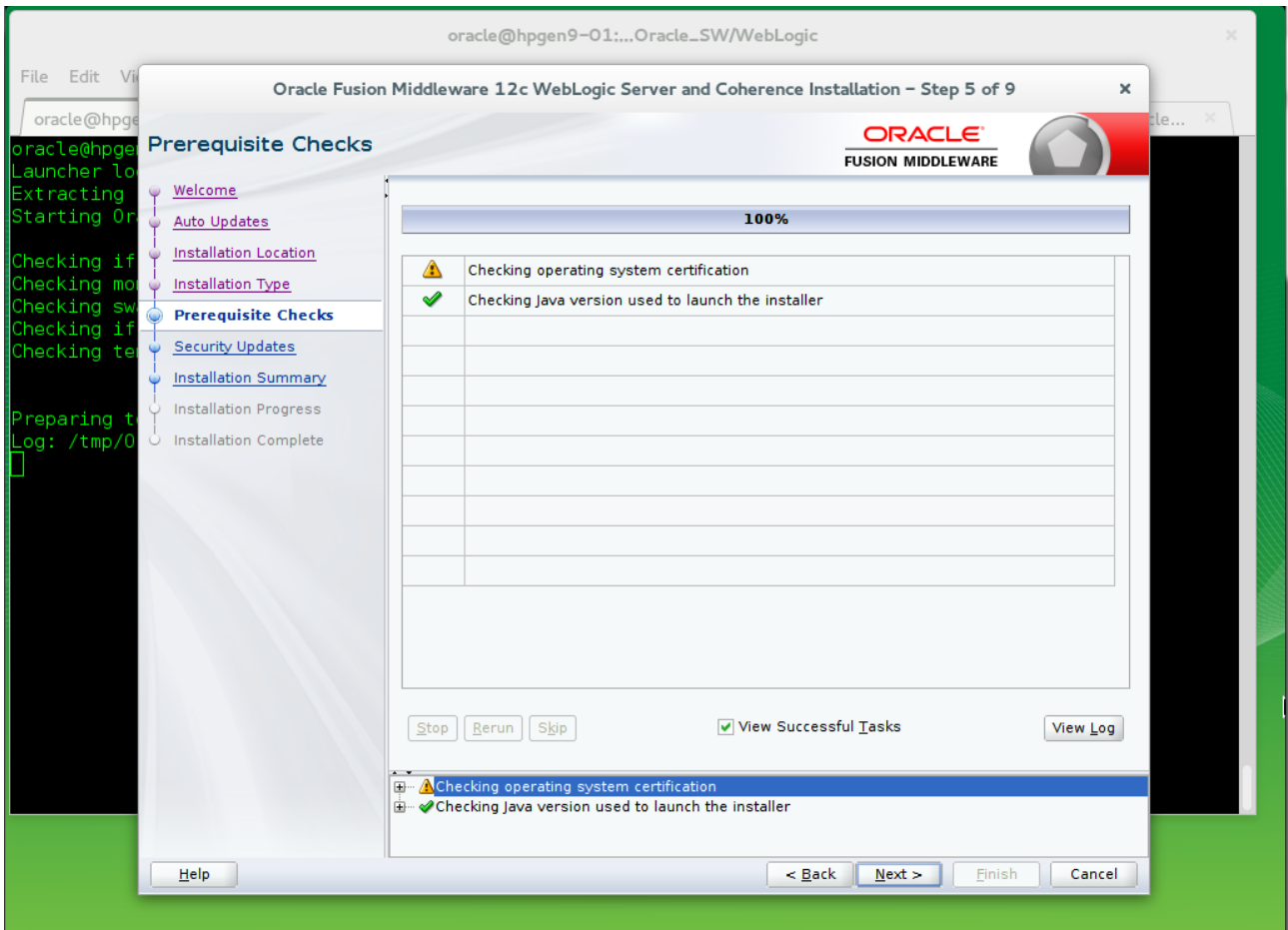
Type the full path of the directory in the Oracle Home field, then click **Next** to continue.

5). Installation Type.



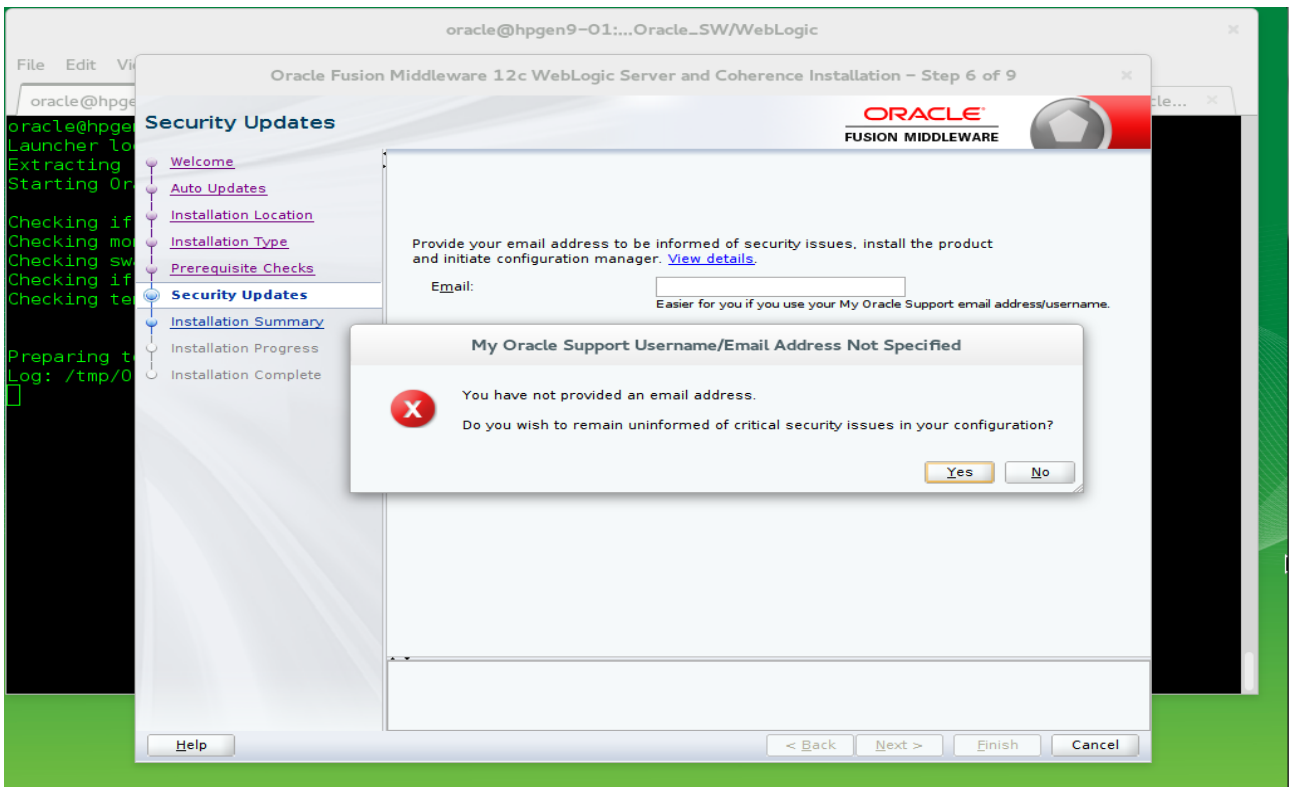
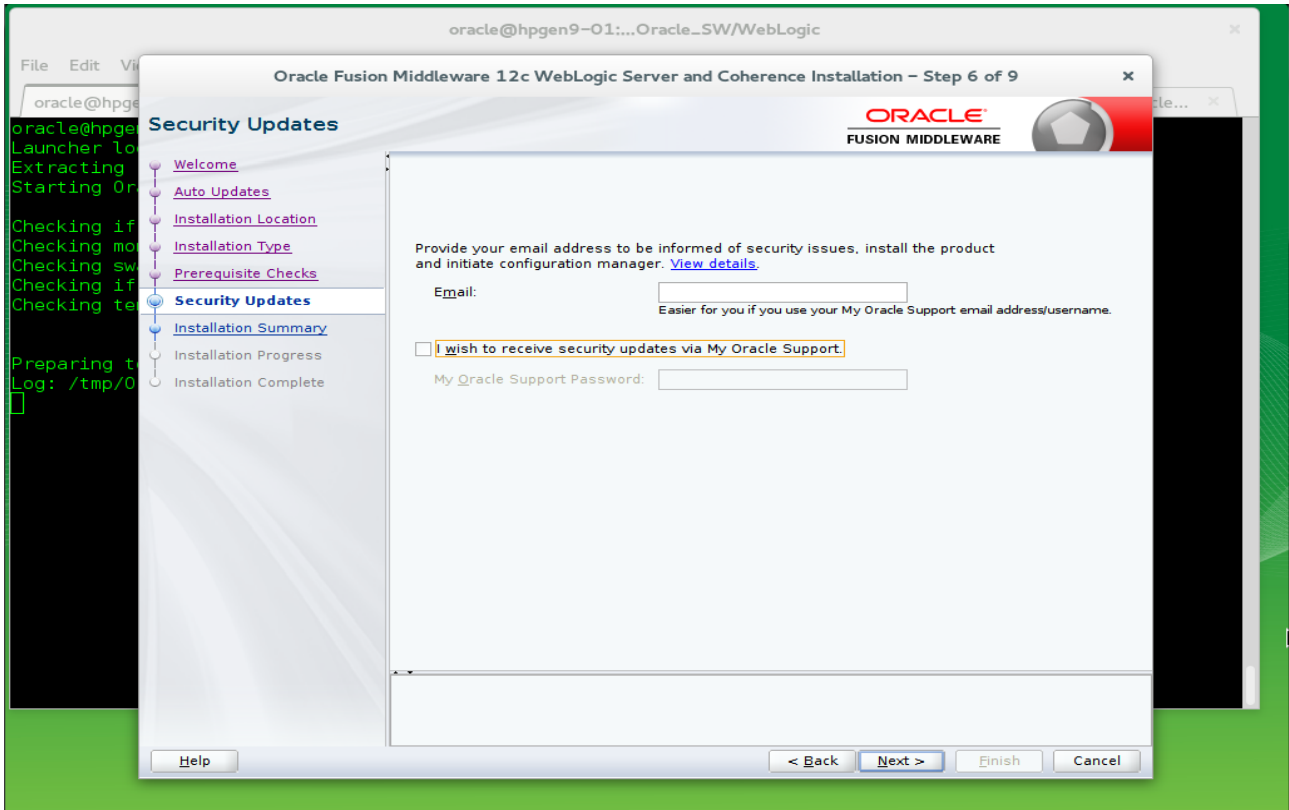
Use this screen to determine the type of installation you want to perform, then click **Next** to continue.

6). Prerequisite Checks.



Prerequisite Checks results will be shown as above, click **Next** to continue.

7). Security Updates.



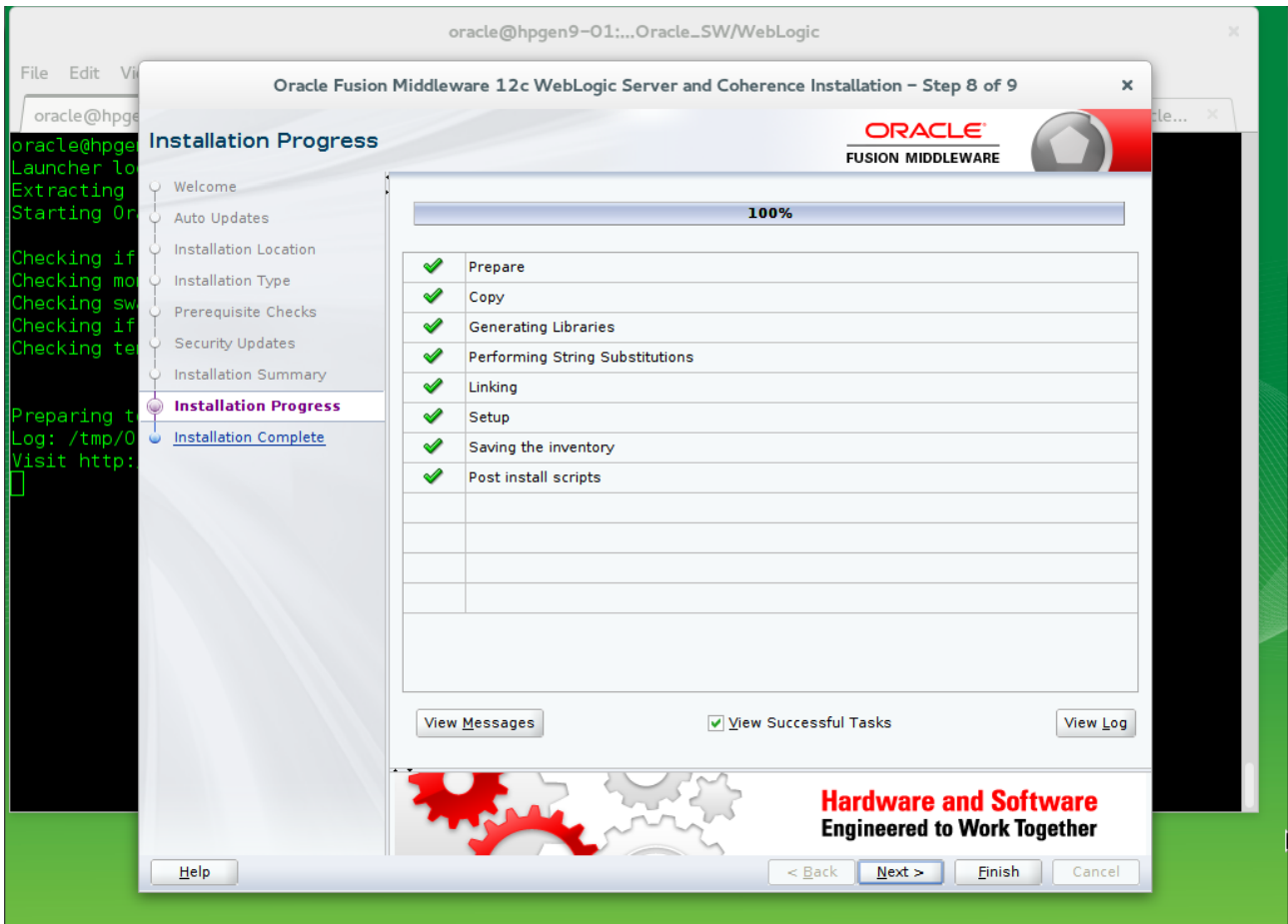
If you wish to register your installation, enter your Email address and your My Oracle Support password. If you wish to decline registration, deselect "I wish to receive security updates via My Oracle Support" and confirm your choice.

8). Installation Summary.



This screen contains a list of the feature sets you selected for installation, along with the approximate amount of disk space to be used by the feature sets once installation is complete. Check the information, then click **Install** to continue.

9). Installation Progress.



This screen shows the progress of the installation. When the progress bar reaches 100%, the installation is complete. Click **Finish** to continue.

10). Specify ASM Password.



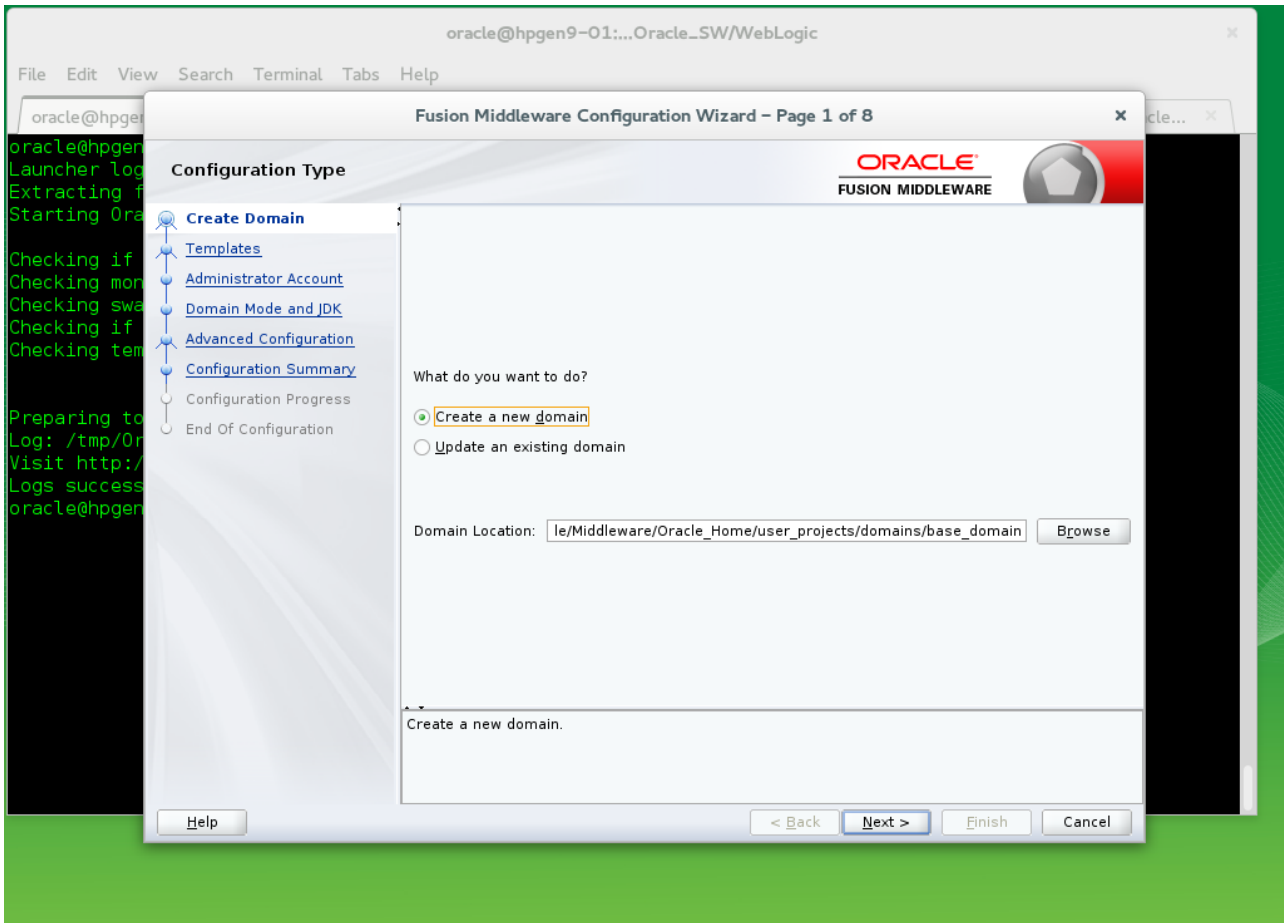
This screen appears at the conclusion of the installation. Select option "Automatically Launch the Configuration Wizard", then click **Finish** to dismiss the installer.

2. Creating and Configuring the WebLogic Domain

2-1. To begin domain configuration, you can automatically launch the Configuration Wizard through the option "**Automatically Launch the Configuration Wizard**" on the last Installation complete screen. You can also navigate to the '**ORACLE_HOME/oracle_common/common/bin**' directory and start the WebLogic Server Configuration Wizard by running: '**./config.sh**'.

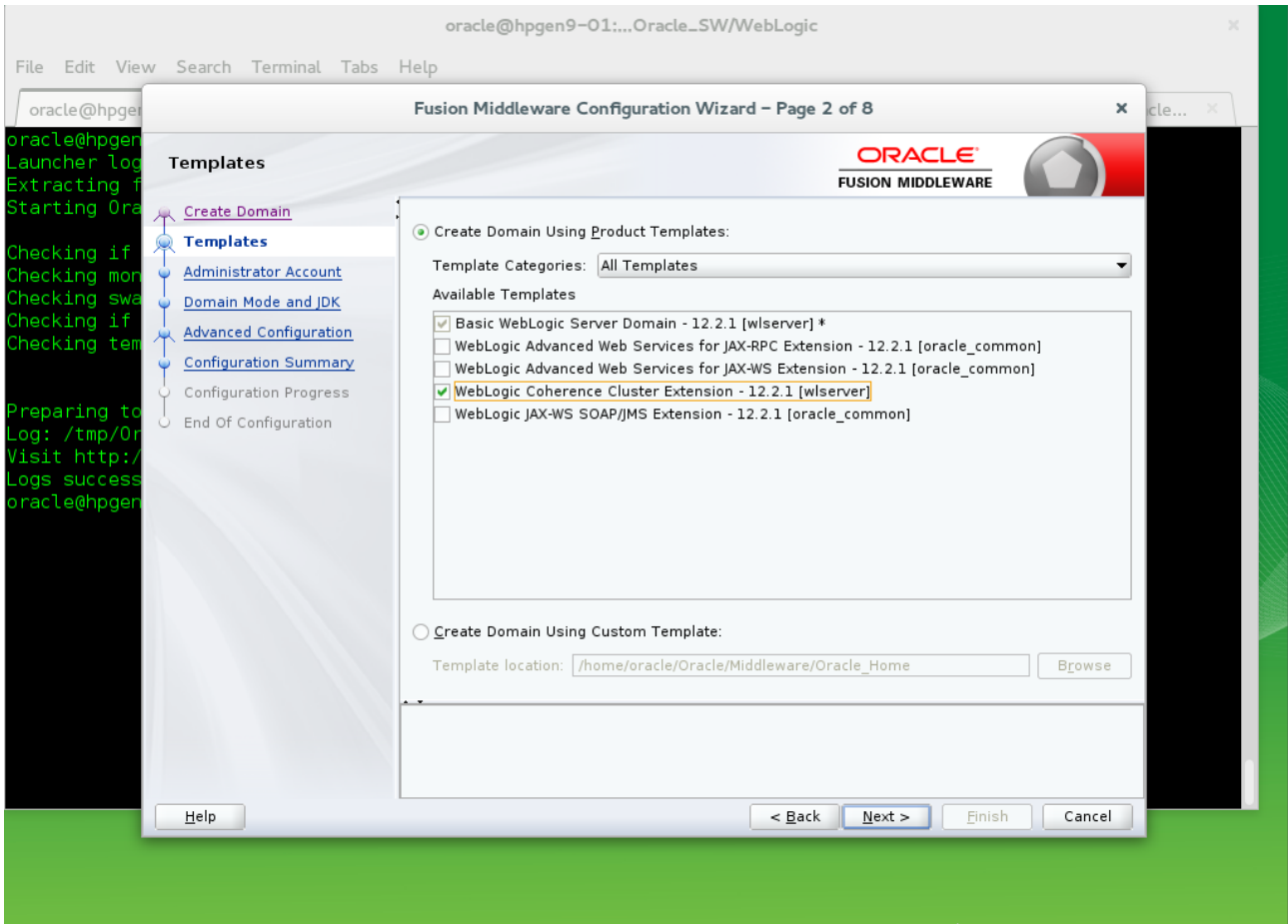
Starting configuration:

1). Configuration Type.



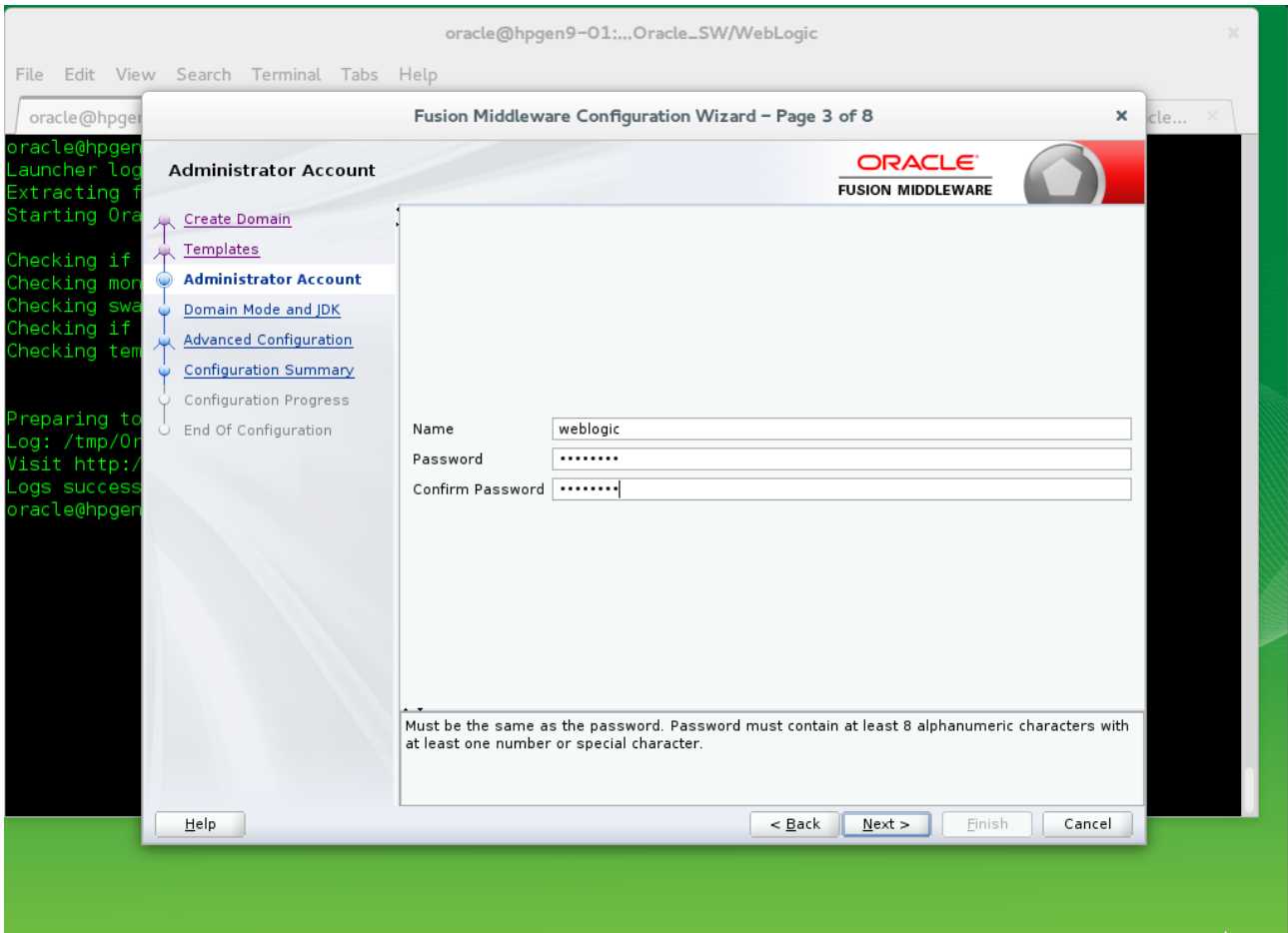
Select option "**Create a New Domain**" and specify the Domain home directory in the "**Domain Location**" field, then click **Next** to continue.

2). Templates.



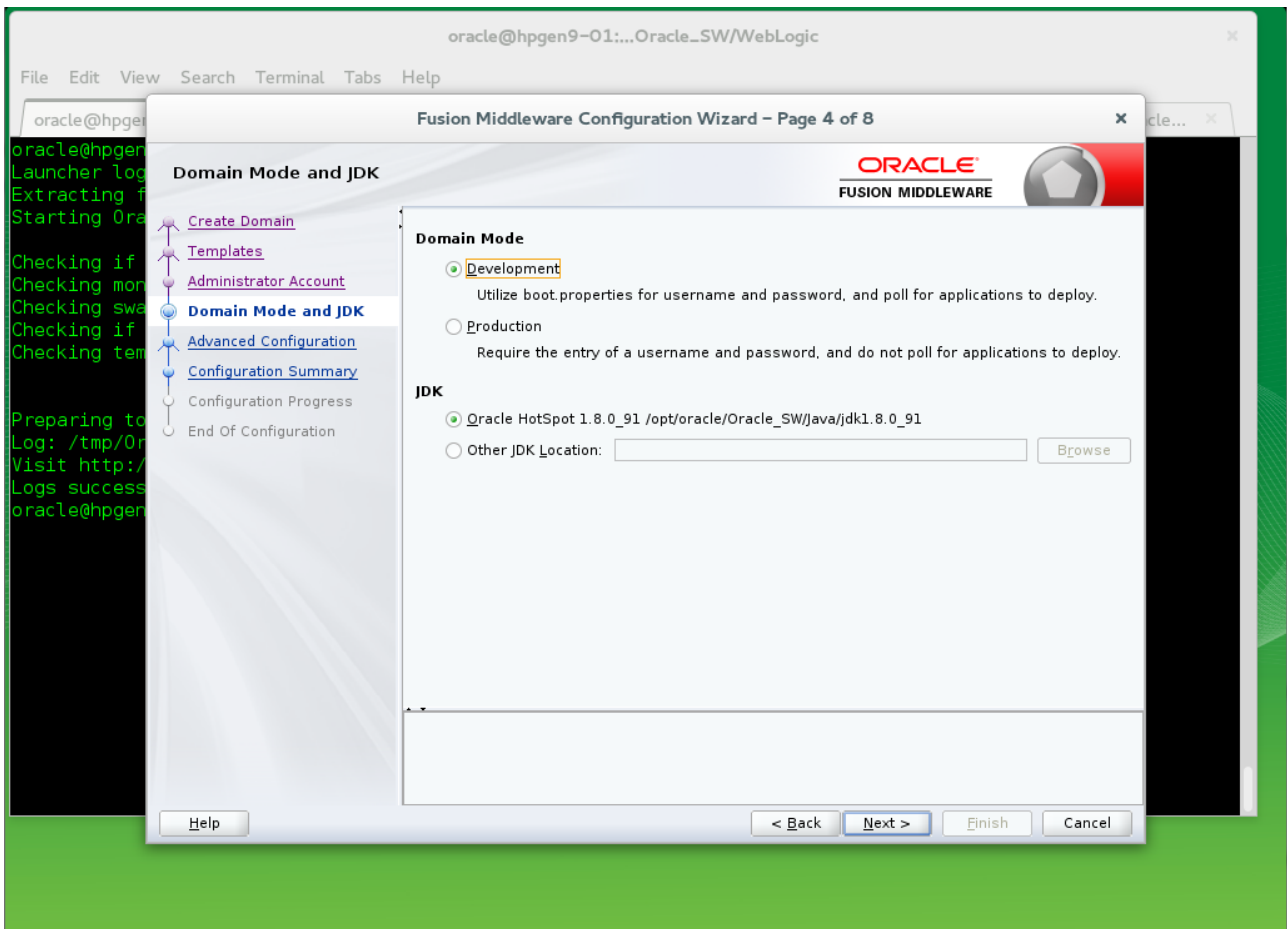
On the Templates screen select "**Basic WebLogic Server Domain (selected by default)**" and "**WebLogic Coherence Cluster Extension**" for configuration, then click **Next** to continue.

3). Administrator Account.



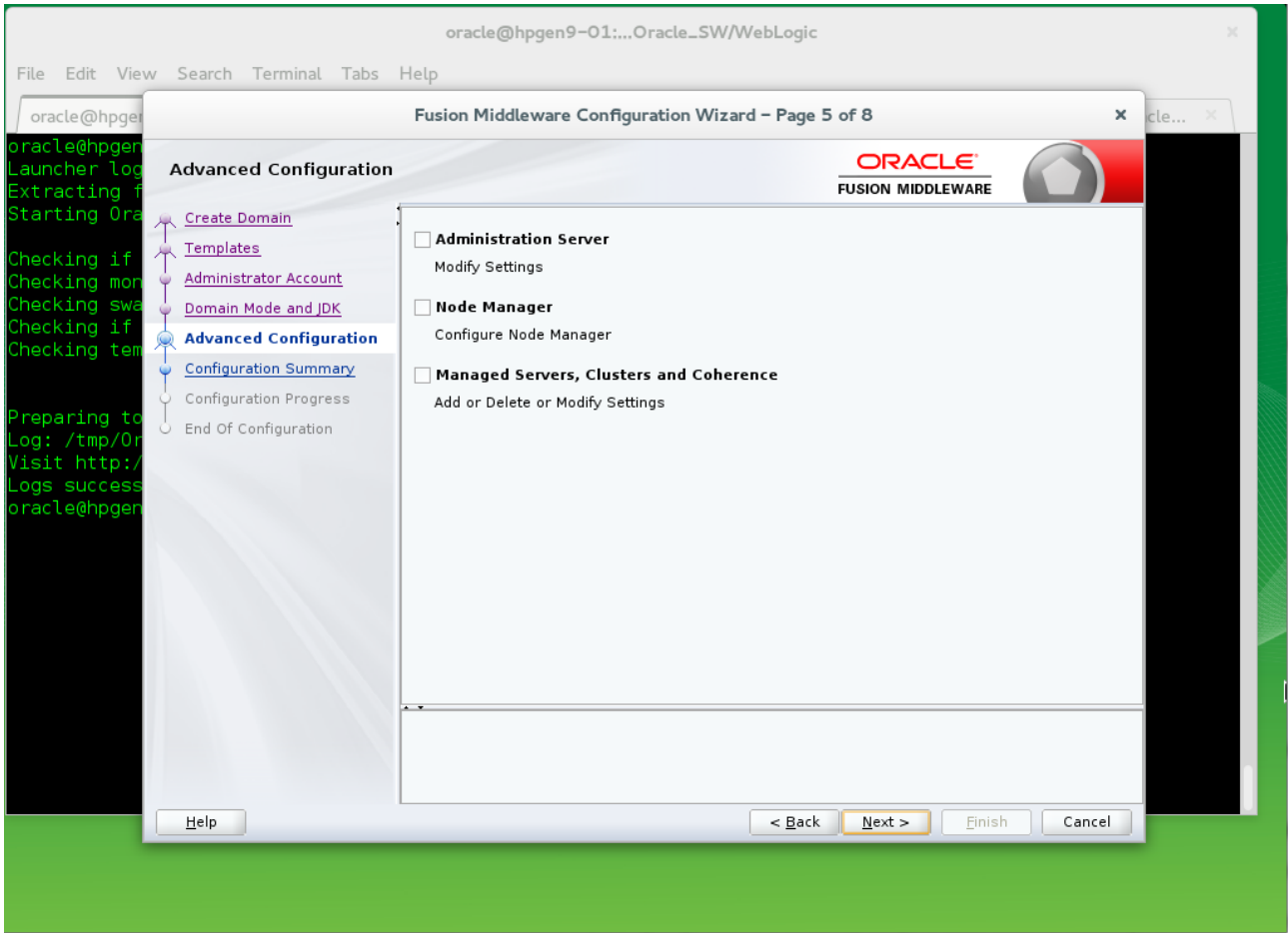
Specify the user name and password for the default WebLogic Administrator account for the domain, then click **Next** to continue.

4). Domain Mode and JDK.



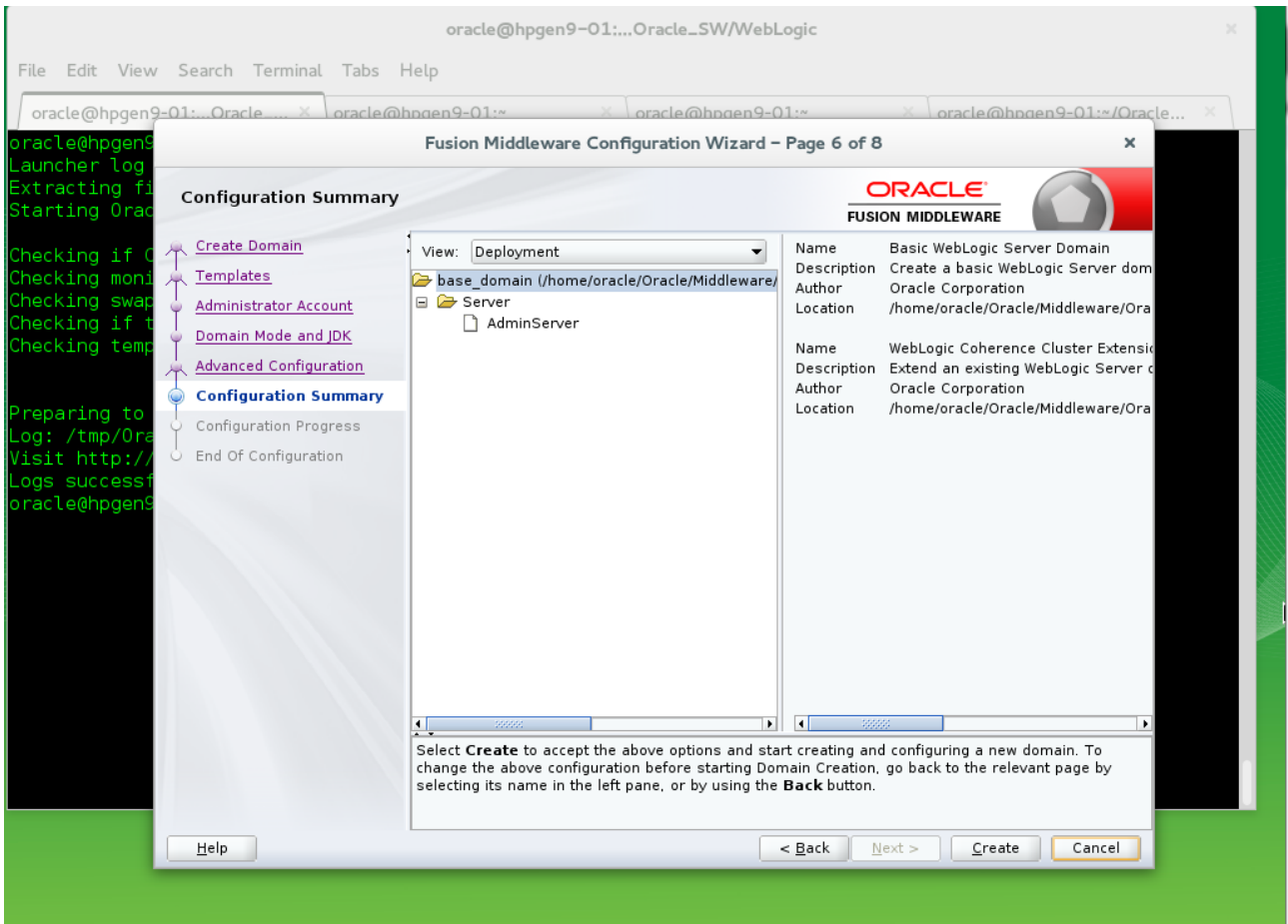
Select "**Development**" in the Domain Mode field, select the "**Oracle HotSpot**" in the JDK field. Then click **Next** to continue.

5). Advanced Configuration.



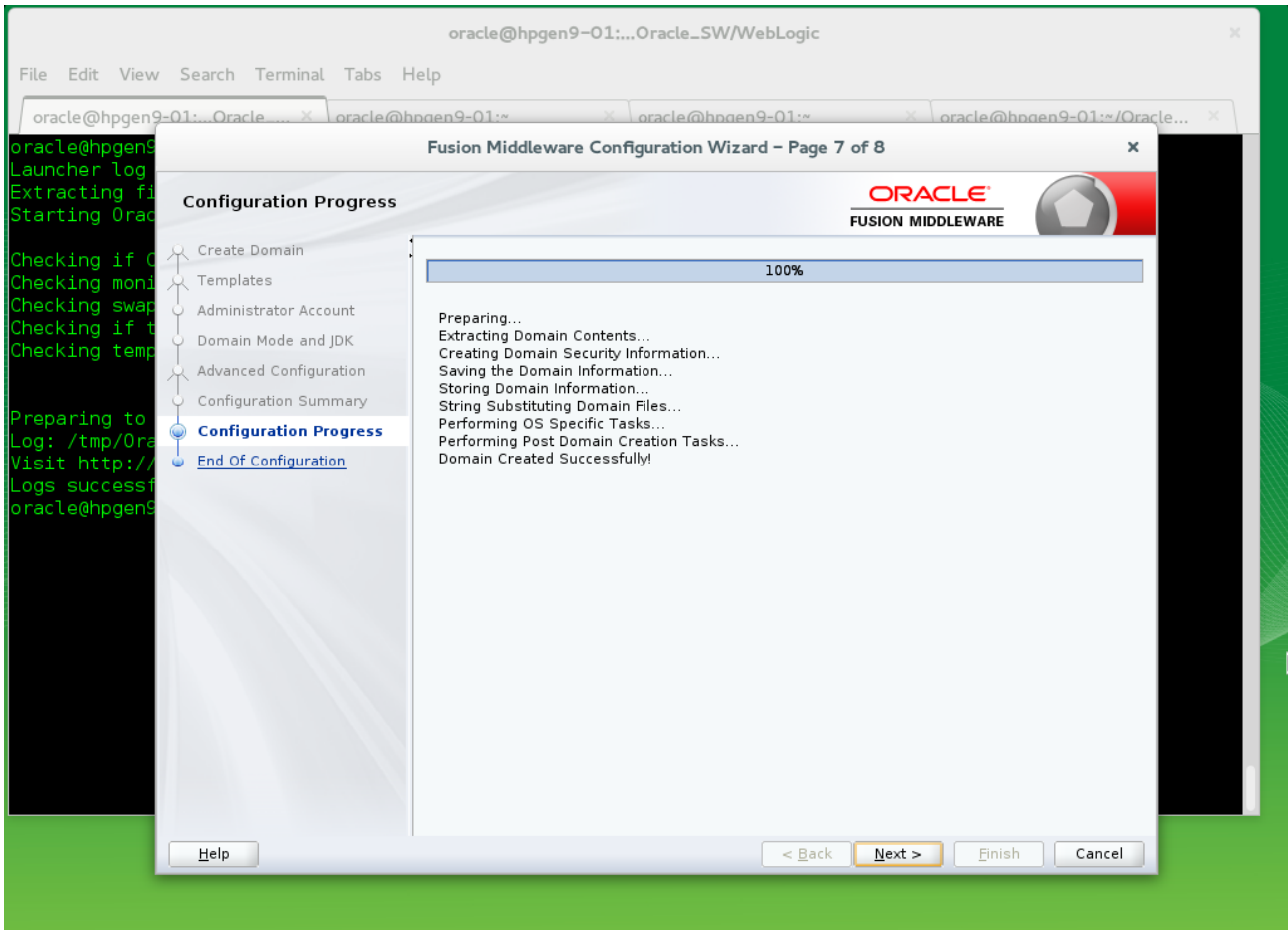
According to your requirements, select the desired options on the Advanced Configuration screen. Then click **Next** to continue.

6). Configuration Summary.



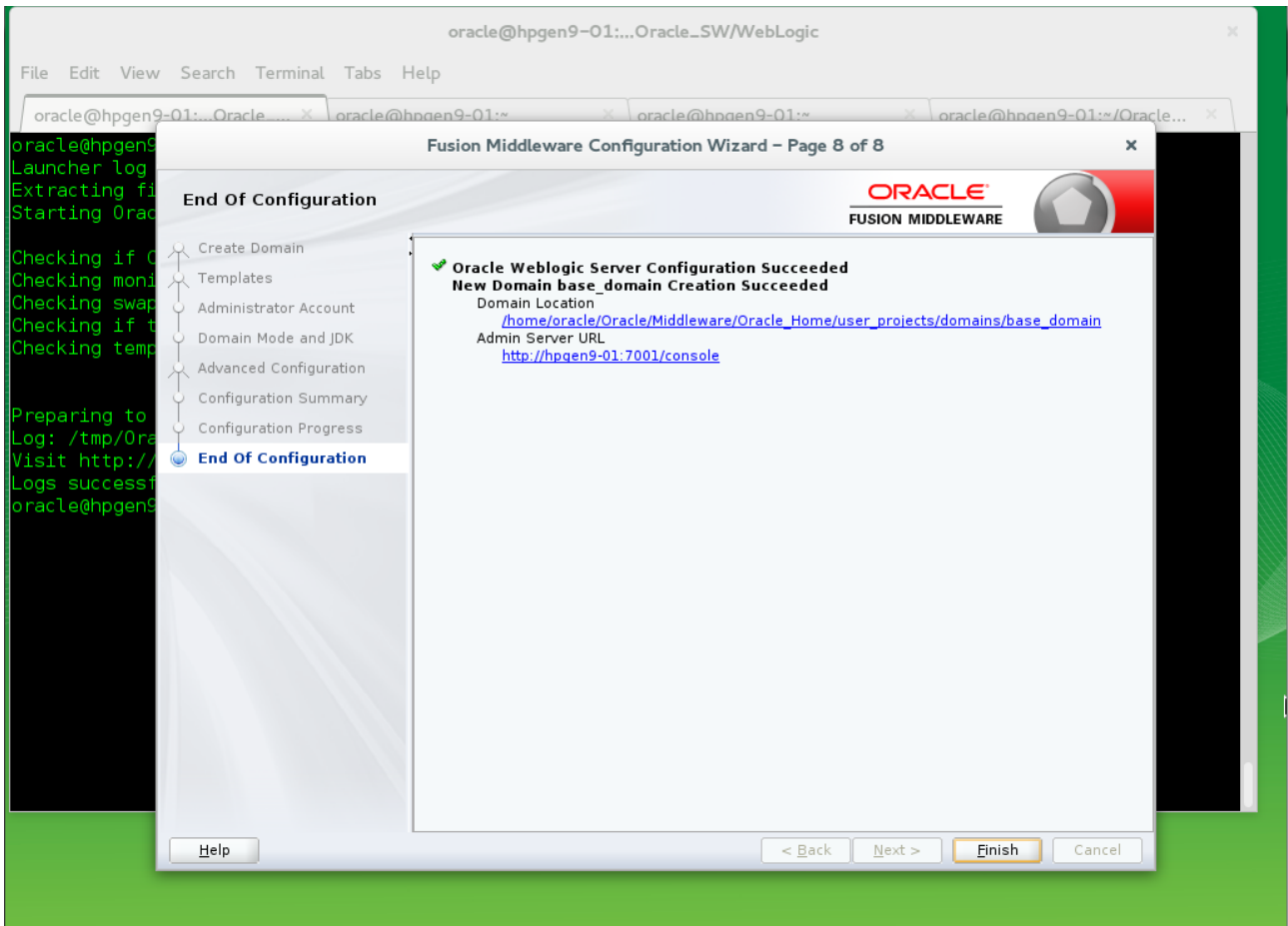
Review this screen to verify the information is correct, then click **Create** to continue.

7). Configuration Progress.



The Configuration Progress screen as shown above, once you see: "Domain Created successfully", click **Next** to continue.

8). End Of Configuration.

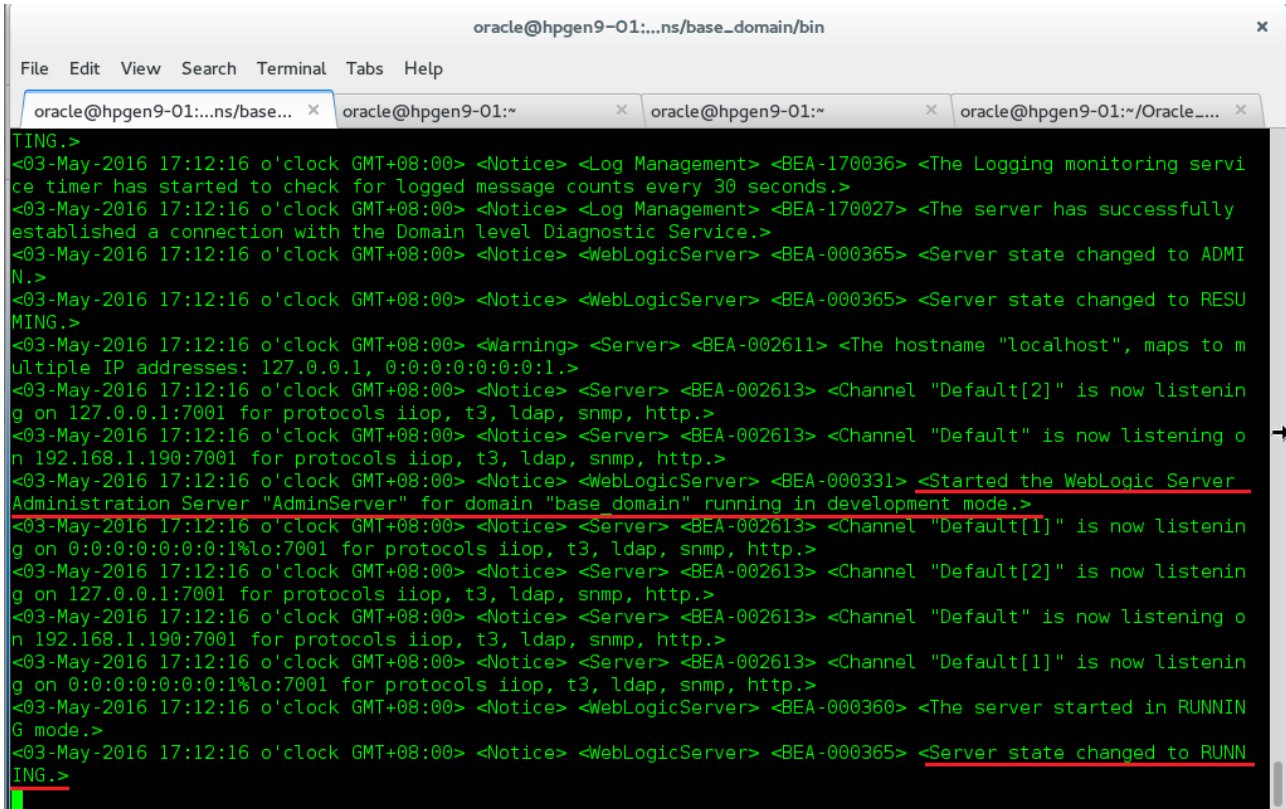


Once you see: "Oracle Weblogic Server Configuration Succeeded", record the "**Domain Location**" and "**Admin Server URL**", then click **Finish** to dismiss the Configuration Wizard.

3. Starting the Administration Server and verifying the Configuration

3-1. To start the Administration Server, go to the DOMAIN_HOME/bin directory and run `./startWebLogic.sh`.

Figure 3-1 Starting the Administration Server through a terminal



```
oracle@hpgen9-01:...ns/base_domain/bin
File Edit View Search Terminal Tabs Help
oracle@hpgen9-01:...ns/base... x oracle@hpgen9-01:~ x oracle@hpgen9-01:~ x oracle@hpgen9-01:~/Oracle.... x
TING.>
<03-May-2016 17:12:16 o'clock GMT+08:00> <Notice> <Log Management> <BEA-170036> <The Logging monitoring service timer has started to check for logged message counts every 30 seconds.>
<03-May-2016 17:12:16 o'clock GMT+08:00> <Notice> <Log Management> <BEA-170027> <The server has successfully established a connection with the Domain level Diagnostic Service.>
<03-May-2016 17:12:16 o'clock GMT+08:00> <Notice> <WebLogicServer> <BEA-000365> <Server state changed to ADMIN.>
<03-May-2016 17:12:16 o'clock GMT+08:00> <Notice> <WebLogicServer> <BEA-000365> <Server state changed to RESUMING.>
<03-May-2016 17:12:16 o'clock GMT+08:00> <Warning> <Server> <BEA-002611> <The hostname "localhost", maps to multiple IP addresses: 127.0.0.1, 0:0:0:0:0:0:1.>
<03-May-2016 17:12:16 o'clock GMT+08:00> <Notice> <Server> <BEA-002613> <Channel "Default[2]" is now listening on 127.0.0.1:7001 for protocols iiop, t3, ldap, snmp, http.>
<03-May-2016 17:12:16 o'clock GMT+08:00> <Notice> <Server> <BEA-002613> <Channel "Default" is now listening on 192.168.1.190:7001 for protocols iiop, t3, ldap, snmp, http.>
<03-May-2016 17:12:16 o'clock GMT+08:00> <Notice> <WebLogicServer> <BEA-000331> <Started the WebLogic Server Administration Server "AdminServer" for domain "base domain" running in development mode.>
<03-May-2016 17:12:16 o'clock GMT+08:00> <Notice> <Server> <BEA-002613> <Channel "Default[1]" is now listening on 0:0:0:0:0:0:1%lo:7001 for protocols iiop, t3, ldap, snmp, http.>
<03-May-2016 17:12:16 o'clock GMT+08:00> <Notice> <Server> <BEA-002613> <Channel "Default[2]" is now listening on 127.0.0.1:7001 for protocols iiop, t3, ldap, snmp, http.>
<03-May-2016 17:12:16 o'clock GMT+08:00> <Notice> <Server> <BEA-002613> <Channel "Default" is now listening on 192.168.1.190:7001 for protocols iiop, t3, ldap, snmp, http.>
<03-May-2016 17:12:16 o'clock GMT+08:00> <Notice> <Server> <BEA-002613> <Channel "Default[1]" is now listening on 0:0:0:0:0:0:1%lo:7001 for protocols iiop, t3, ldap, snmp, http.>
<03-May-2016 17:12:16 o'clock GMT+08:00> <Notice> <WebLogicServer> <BEA-000360> <The server started in RUNNING mode.>
<03-May-2016 17:12:16 o'clock GMT+08:00> <Notice> <WebLogicServer> <BEA-000365> <Server state changed to RUNNING.>
```

3-2. Access to Oracle WebLogic Server Administration Console.

Figure 3-2 Access to WebLogic Server 12cR2 Admin Console - Login page

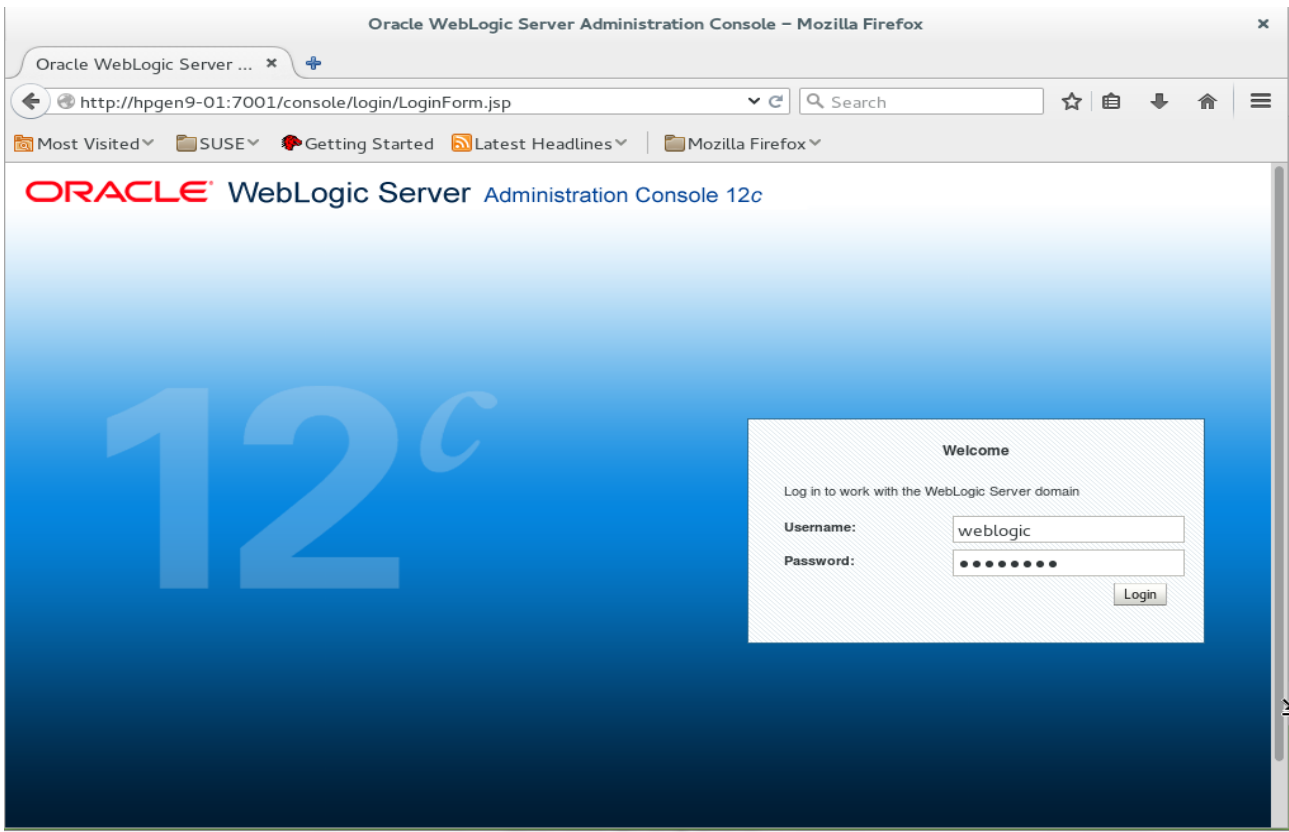
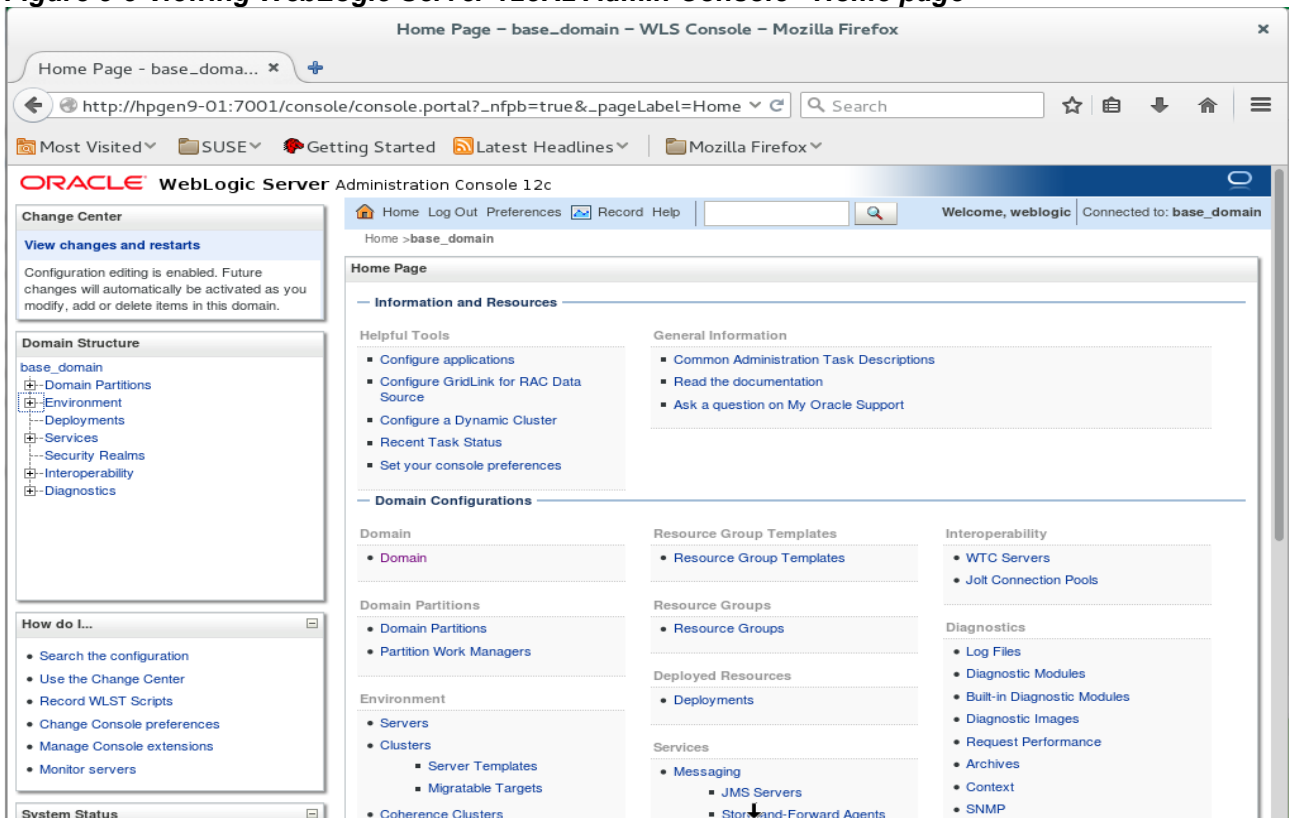


Figure 3-3 Viewing WebLogic Server 12cR2 Admin Console - Home page



Additional Comments

This document shows how to create a standard installation topology for Oracle WebLogic Server. You can extend this topology to make it highly available and secure so it is suitable for a production system.

***Thank you !
SUSE ISV Engineering Team
May 6th, 2016***

<https://www.suse.com>