

Oracle Database (10gR2 & 11gR2) on SUSE Linux Enterprise Server 11 SP2

Arun Singh



Introduction

This paper is to help you understand minor difference you may encounter while installing Oracle Database on SUSE Linux Enterprise Server. Here we are using x86_64 version but steps are same for other platforms. We will use latest version of Oracle Database 11gR2 (11.2.0.3) and 10gR2 (10.2.0.5).

Note: This document is provided as a supplement to earlier SUSE released Installation guides for SLES11 SP1.

Software

Oracle database version 10.2.0.5 and 11.2.0.3 are available via Oracle Support portal (<http://support.oracle.com>).

Installation

Install SUSE Linux Enterprise Server 11 SP2 with “**Oracle Server Base**” and “**C/C++ Compiler and Tools**” pattern. You can follow Oracle Installation manual for selective required rpms.

```
sles11sp2:~ # uname -a
Linux sles11sp2 3.0.13-0.27-default #1 SMP Wed Feb 15 13:33:49 UTC 2012 (d73692b) x86_64
x86_64 x86_64 GNU/Linux
sles11sp2:~ # cat /etc/SuSE-release
SUSE Linux Enterprise Server 11 (x86_64)
VERSION = 11
PATCHLEVEL = 2
sles11sp2:~ # █
```

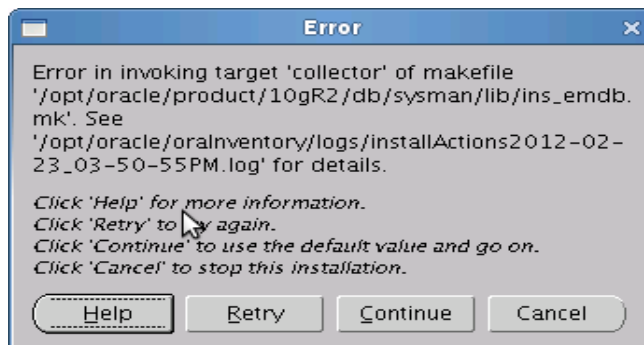
1. Installing Oracle Database 10.2.0.5

Please use Oracle Installation Guide for SLES11 SP1 for detailed instructions (http://ftp.novell.com/partners/oracle/docs/10gR2_sles11_sp1_install.pdf).

In short, you can follow the steps outlines below:

1. Install Oracle Database 10.2.0.1 as a **Database Software Only** option

- a) Please use “**-ignoreSysPrereqs**” If SUSE Linux is not recognized by OUI. This happens only when OUI is older than current SLES version.
- b) Ignore following linking warning

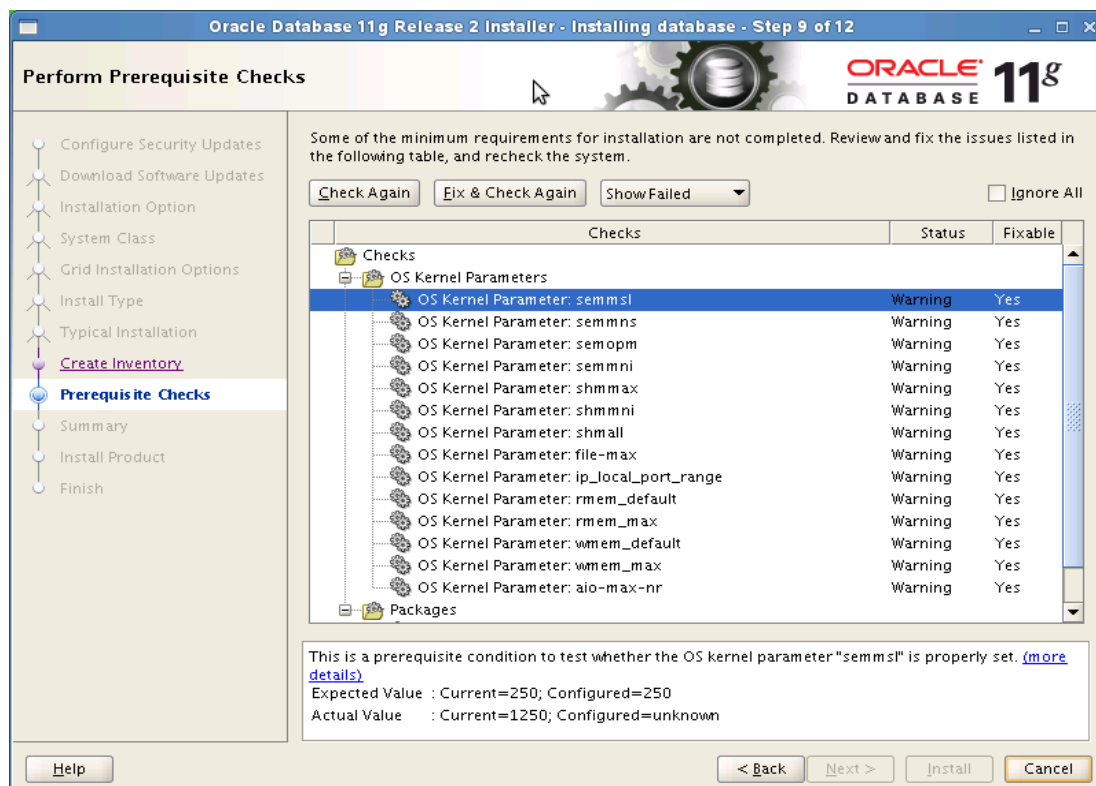


2. Install Oracle Database 10.2.0.5 Patch
3. Configure Oracle Net Services (netca)
4. Create Oracle Database using Database Configuration Assistant(dbca)

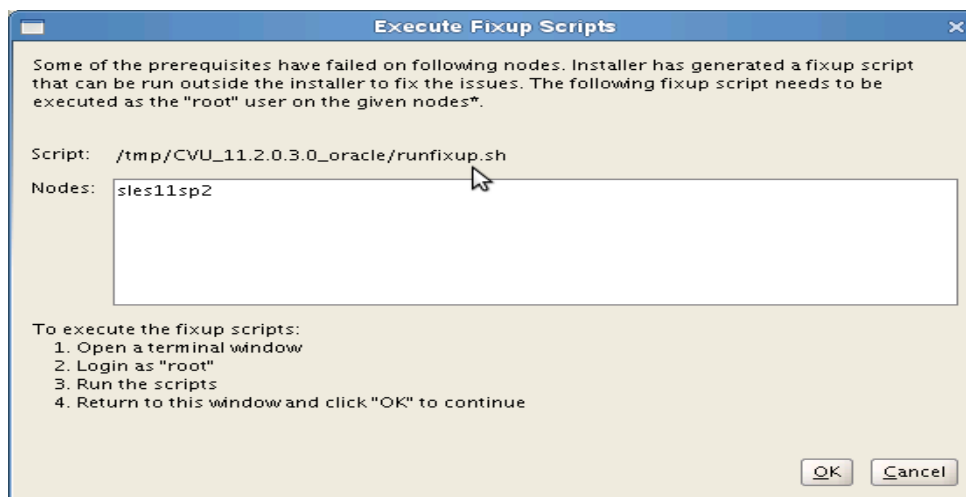
```
oracle@sles11sp2:~  
File Edit View Terminal Help  
oracle@sles11sp2:~> sqlplus / as sysdba  
  
SQL*Plus: Release 10.2.0.5.0 - Production on Thu Feb 23 16:18:15 2012  
  
Copyright (c) 1982, 2010, Oracle. All Rights Reserved.  
  
Connected to:  
Oracle Database 10g Enterprise Edition Release 10.2.0.5.0 - 64bit Production  
With the Partitioning, OLAP, Data Mining and Real Application Testing options  
  
SQL> show sga  
  
Total System Global Area 1157627904 bytes  
Fixed Size 2095768 bytes  
Variable Size 301991272 bytes  
Database Buffers 838860800 bytes  
Redo Buffers 14680064 bytes  
SQL> HOST uname -a  
Linux sles11sp2 3.0.13-0.27-default #1 SMP Wed Feb 15 13:33:49 UTC 2012 (d73692b  
) x86_64 x86_64 x86_64 GNU/Linux  
  
SQL> █
```

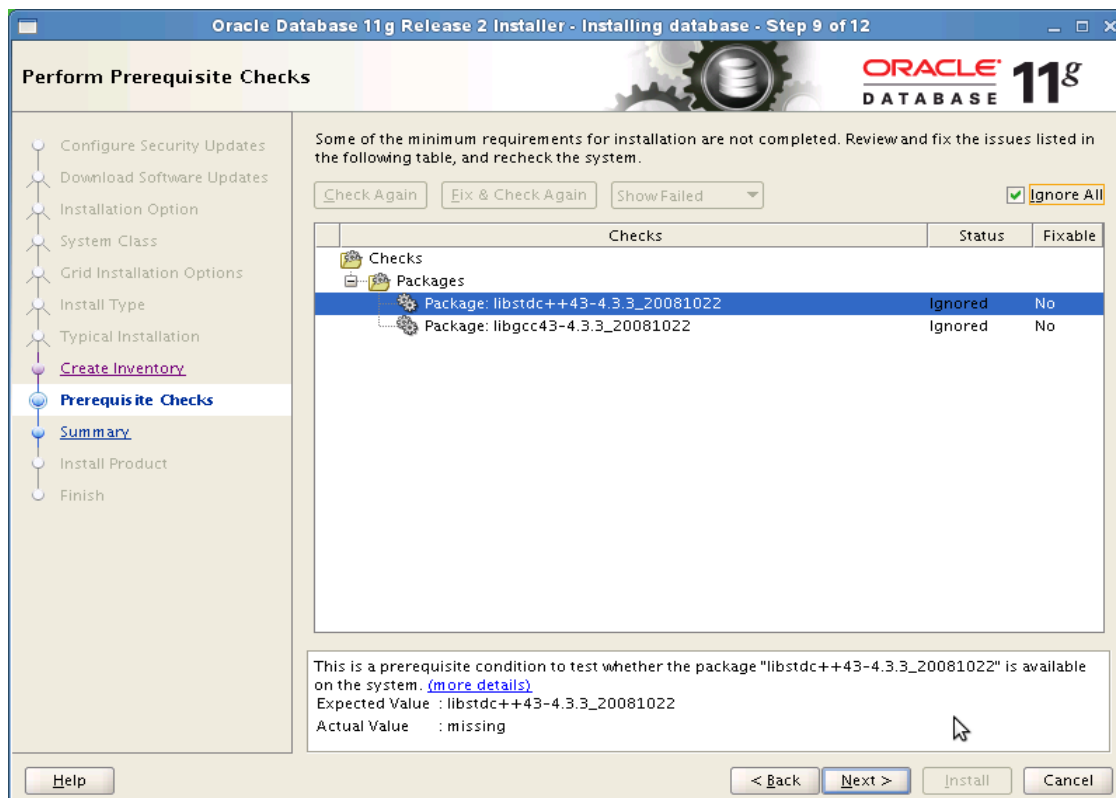
2. Installing Oracle Database 11.2.0.3

Please use Oracle 11gR2 Installation Guide for SLES11 SP1 (http://ftp.novell.com/partners/oracle/docs/11gR2_sles11_sp1_install.pdf), to get familiar with installation process. Instruction for SLES11 SP2 is similar, with following minor error/warning messages:



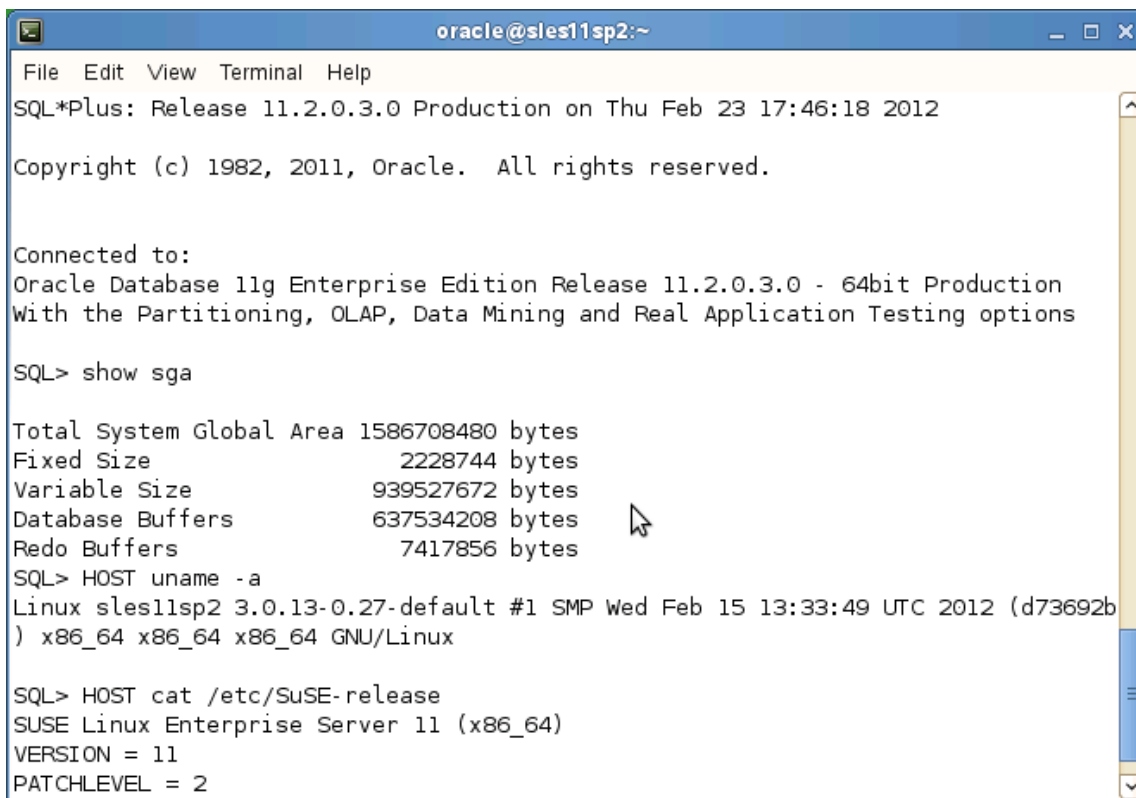
Select **“Fix & Check Again”** and run suggested script. This updates sysctl.conf file.





Select “Ignore All” as SLES11 SP2 has latest versions:

```
sles11sp2:/opt/oracle # rpm -qa |grep libgcc46
libgcc46-32bit-4.6.1_20110701-0.13.9
libgcc46-4.6.1_20110701-0.13.9
sles11sp2:/opt/oracle # rpm -qa |grep libstdc++46
libstdc++46-4.6.1_20110701-0.13.9
libstdc++46-32bit-4.6.1_20110701-0.13.9
sles11sp2:/opt/oracle # █
```



```
oracle@sles11sp2:~
File Edit View Terminal Help
SQL*Plus: Release 11.2.0.3.0 Production on Thu Feb 23 17:46:18 2012

Copyright (c) 1982, 2011, Oracle. All rights reserved.

Connected to:
Oracle Database 11g Enterprise Edition Release 11.2.0.3.0 - 64bit Production
With the Partitioning, OLAP, Data Mining and Real Application Testing options

SQL> show sga

Total System Global Area 1586708480 bytes
Fixed Size                2228744 bytes
Variable Size             939527672 bytes
Database Buffers         637534208 bytes
Redo Buffers              7417856 bytes
SQL> HOST uname -a
Linux sles11sp2 3.0.13-0.27-default #1 SMP Wed Feb 15 13:33:49 UTC 2012 (d73692b
) x86_64 x86_64 x86_64 GNU/Linux

SQL> HOST cat /etc/SuSE-release
SUSE Linux Enterprise Server 11 (x86_64)
VERSION = 11
PATCHLEVEL = 2
```

Additional Information

Thank you for selecting SUSE Linux as your platform of choice. Please send your question or comments to SUSE mailing list at suse-oracle@listx.novell.com.